



**Calhoun County Electric  
Cooperative Association**

A Touchstone Energy® Cooperative



Monthly publication for member-owners

# CCECA NEWS

Visit us online at [www.calhounrec.coop](http://www.calhounrec.coop)



## MARCH DIRECTOR SPOTLIGHT

### District 3 – Jason McKenney



Director McKenney has been a member of Calhoun County ECA since 2003 and currently serves as the Board Secretary for CCECA's Board of Directors. Jason lives just outside of Somers with his wife, Cherri, and is a Deputy for the Calhoun County Sheriff's Department. He is an active member of the Twin Lakes Masonic Lodge, Somers United Methodist Church, and serves as a volunteer for the Reading-Cedar Fire Department at Farnhamville.

As a director for CCECA, Jason recently completed the last required course for the Certified Cooperative Director (CCD) program. To achieve this milestone, Jason was required to attend five courses that focused on basic governance knowledge and the essential skills required of cooperative directors. Achieving CCD would seem fairly easy to the average person, however the opportunity to attend all five classes does not come up every year. Many of the courses Jason has attended are those that are only offered every other or every third year. Jason's next professional goal with the cooperative will be to reach his Board Leadership Certificate or BLC. The BLC program will have Jason focusing in greater depth on specific industry and governance issues such as risk management, rate making and policy development.

As we congratulate Jason on his recent completion of the CCD program, we thought we would ask him the three popular questions that we have asked the last two directors. Here is what Jason had to say:

**1. After serving as a cooperative director, what is something you'd like your fellow members to know about the co-op or the electric industry?**

*Serving as a director for your local co-op is more complex and involved than any other board or commission that I have ever been a part of. There are so many issues that play a part in providing "safe, reliable, and responsible electric service at a fair price..." that it is sometimes mind-boggling. From financials to grass roots advocacy to policy development, or just understanding all the*

*components of an electric bill, it's a very steep learning curve. It takes a long time to get it all straight in your head. A big thanks goes to our expert staff who takes the time to explain our "dumb questions" (sometimes on a monthly basis), so we can make informed decisions that affect you, the consumer. At your local co-op we truly do work for you.*

**2. What trend or issue are you most concerned about in the year ahead for the co-op or the electric industry?**

*Power Supply – with the current administration pushing renewables and electric vehicles, the need for an abundant and robust power supply is essential. We still have to go with the "all of the above" power supply model including coal and nuclear. The sun doesn't always shine, and the wind doesn't always blow. Renewables do not provide the stable base load generation we need for cold winters and hot summers. And electric vehicles just add to the need for stable base load power. We can't phase out coal or natural gas power plants just for the sake of the environment if we want to keep the lights on. Let's face it, China and India are turning up new, less-efficient coal plants on a weekly basis that are bigger and dirtier than anything we have in the US. Let's make them play by the same rules to save our environment. Don't get me wrong, I'm in favor of both stable power supply and environmental responsibility. I just don't think developed countries can move the bar enough with environmental regulations to make up for how fast developing countries (like China and India) are polluting with no regard for the environment. Developed countries shouldn't be the only ones sacrificing stable base load power to save our planet.*

**3. What do you appreciate about the cooperative now that you serve as a director on the board?**

*Before becoming a Director, I was never aware of how involved the co-op was in local economic development. From economic development loans through USDA's REDLG program to the development of the Calhoun County Business Park, your co-op strives to provide businesses in the community with more than just power. We are a member of this community and want to see it grow and prosper just as much as you do. Investment in local economic development is a win for everyone involved.*

### Another Director in Line for National Recognition Certificate

With the ever-changing business environment imposing new demands on electric cooperative directors, we would like to congratulate Director Maulsby on her completion of the last course required for the Certified Cooperative Director (CCD) Program. In today's electric industry, it's important for electric cooperatives like CCECA to recognize its directors who are putting in extra time to further their knowledge and understanding of the cooperative structure and purpose. Congratulations Darcy!





# Update Your Contact Information

When was the last time you updated your contact information with Calhoun County ECA?

- Call 712-297-7112 or
- Send the completed form with your payment

Complete the form and send with your monthly payment or mail directly to:  
**Calhoun County Electric Cooperative**  
PO Box 312  
Rockwell City, IA 50579

Name: \_\_\_\_\_

Phone: \_\_\_\_\_ ☐ Landline ☐ Cell

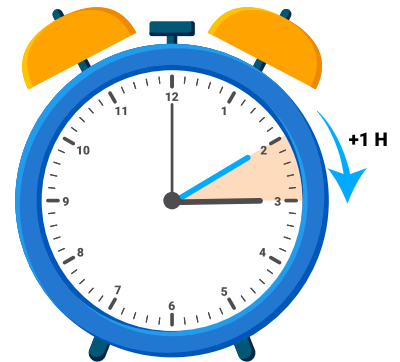
Email: \_\_\_\_\_

## Four Ways an Energy Audit Can Benefit You

A home energy audit can determine the overall efficiency of your home or business and ways to improve it. Here are the main benefits of conducting an energy audit.

- \$ An audit will identify where most of your energy use is going and ways to use energy more efficiently to save money.
- \$ It can determine if appliances and heating/cooling equipment are properly sized for the home or business.

- \$ An audit can identify potential safety issues with home wiring and ventilation.
- \$ Making changes based on the audit recommendations will raise your property value.



**DAYLIGHT  
SAVING TIME**  
**SPRING FORWARD**  
**March 10, 2024**

## NATIONAL AG WEEK MARCH 17-23, 2024



Calhoun County ECA would like to acknowledge all of our member owners that work in Agriculture during National Ag Week. From the field to the table, we are committed to you, our members. Thank you for your hard work!

CCECA NEWS

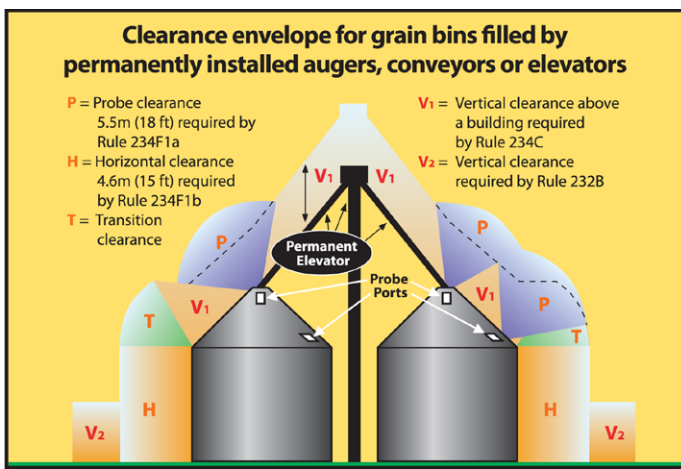
## LIHEAP End Notice

Please take note that the winter moratorium ends April 1, 2024. If your account(s) is past due and you have not made payment arrangements by March 31st, you will be subject to disconnection of your electric service. To avoid disconnection, you must pay your electric bill in full by April 1st or request a reasonable payment agreement for your past due account(s).

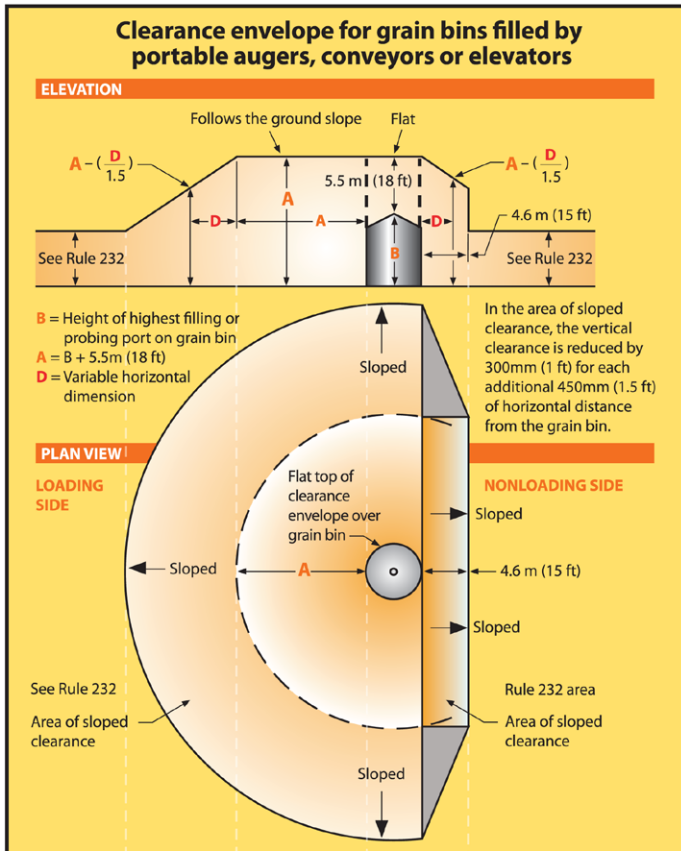
To pay off your account or establish a payment agreement, please call our office at 712-297-7112.







From IEEE Std. C2-2017, "National Electrical Safety Code." © Copyright 2016 by IEEE. All rights reserved.



From IEEE Std. C2-2017, "National Electrical Safety Code." © Copyright 2016 by IEEE. All rights reserved. The IEEE disclaims any responsibility or liability resulting from the placement and use in the described manner.

According to the Iowa Electric Safety Code found in Iowa Administrative Code Chapter 199 -- 25.2(3) b. An electric utility may refuse to provide electric service to any grain bin built near an existing electric line which does not provide the clearances required by the American National Standards Institute (ANSI) C2-2017 "National Electrical Safety Code," Rule 234F. This paragraph "b" shall apply only to grain bins loaded by portable augers, conveyors or elevators and built after September 9, 1992, or to grain bins loaded by permanently installed augers, conveyors, or elevator systems installed after December 24, 1997. (As adopted by the Iowa Utilities Board)

Calhoun County Electric Cooperative is required by the Iowa Utilities Board to provide this annual notice to farmers, farm lenders, grain bin merchants, and city and county zoning officials. If you have any questions concerning clearance regulations, please call at 712-297-7112.



# Burning Ditches

Properly controlled burns can have many benefits for agricultural land. However, if these burns are not managed safely, they can cause property damage, power outages, injury, and even death. Safe Electricity urges you to make safety a priority and shares tips on special considerations to be taken around power lines.

First, make yourself aware of laws and regulations. Only those who are experienced with fire and burn paths should conduct one. Avoid burning near public roads or airports, as this can create a potentially dangerous visibility hazard. Alert those who potentially may be affected by the burn—including neighbors, the local fire department, and law enforcement. Depending on local regulations, you may also need to obtain a burn permit.

Take special note of power poles and lines. Burning a power pole could cause a widespread power outage and be costly for the individual responsible for the fire.

Cut down grass and weeds, and water the area near the poles as to not encourage fires to encroach. Be careful to keep water streams out of power lines.

If a power pole catches on fire, call the fire department, and alert your utility to handle the possible electrical dangers. Even if you think you can put out the fire yourself, alert the utility to the fact that it caught fire. The creosote, a preservative, on the inside could still be burning the pole from the inside out. In addition, if the pole catches on fire, it could create shock or electrocution hazards to those who may be nearby or spark fires in unintended directions from downed lines.

Also, keep environmental factors, such as temperature,

humidity, and wind direction and speed in mind. The wind speed in the area should be low and in a steady direction so the fire does not get out of control. As environmental factors are subject to change, check forecasts and actual conditions before you begin the burn.

## ENERGY EFFICIENCY TIP OF THE MONTH

Lengthen the life of your clothes dryer with regular cleaning. Clean the lint filter after every load, which improves air circulation and safety. Check the lint trap opening and use a vacuum to remove any lint that's fallen inside the opening.

If you use dryer sheets, check the lint filter for residue buildup. Remove any residue with hot water and a nylon brush or toothbrush. Over time, dryer sheets can leave a film on the filter, which can affect the performance of the motor.



# Energy Trail Tour 2024

Calhoun County Electric Cooperative Association and Corn Belt Power Cooperative invite you to join us for one of two Energy Trail Tours being offered this summer. This 3-day adventure will allow you to experience,

first-hand, how your power providers convert energy from water, wind, and coal into electricity. View coal being mined and see how those mines are then returned to productive farm and native grass lands. Enjoy interactive walking tours through a hydroelectric and coal-fired energy generation facility and other stops along the way. Meet other cooperative member-owners while traveling together across the Dakotas on-board a motor-coach bound for the North Dakota's Energy Loop. Two lucky couples from Calhoun County Electric will be selected at random from those who sign up.



☒ YES, please enter our names in the drawing for the trip.

Our first and second choice of dates:

June 26-28    1st    2nd    (please circle)  
July 24-26    1st    2nd

I/we ☐ have ☐ have not  
participated in this tour in the past.

First Person \_\_\_\_\_

Second Person \_\_\_\_\_

Address \_\_\_\_\_

City \_\_\_\_\_

Phone \_\_\_\_\_

Clip this coupon and return to cooperative by May 3, 2024.

## March Member Challenge

1. What certification did Director McKenney complete in January? \_\_\_\_\_
2. Name one way to try and prevent a Utility pole from catching fire while burning ditches.  
\_\_\_\_\_
3. When are Energy Trail Tour applications due back to CCECA? \_\_\_\_\_

Name \_\_\_\_\_

Find the answers within the stories, features, and content of this newsletter and you could win a prize. **Send your answer to memberchallenge@calhounrec.coop, clip and mail to: Calhoun County Electric Cooperative, PO Box 312, Rockwell City, IA 50579 or submit on our website: www.calhounrec.coop.** You may mail your entry along with your electric bill payment, but remember there is a deadline!

Entries for this issue **must be received by April 1st**. Three names will be drawn from all correct entries. Members will receive a **\$10 credit** on their account. Members who answer the questions correctly and participate at least 4 times throughout the year, will be eligible for a \$100.00 Calhoun County Electric Cooperative Pre-Paid Debit card, through a random drawing, at the end of the year.

*Congratulations January winners:*

*Randy & Kathy Hammen, Steve Vosberg, and Mike Barrett*

## Reach Us

### OFFICE HOURS:

8 a.m. to 4:00 p.m.  
(Mon-Fri)

Contact 24/7 with the following numbers:

### General Phone:

(712) 297-7112

### Toll Free:

(800) 821-4879

### Fax:

(712) 297-7211

### Visit us online:

[www.calhounrec.coop](http://www.calhounrec.coop)

### Email:

[info@calhounrec.coop](mailto:info@calhounrec.coop)

### DIRECTORS:

Jim Miller, President – Fonda  
Steve Boedecker,  
Vice President – Rockwell City  
Jason McKenney,  
Secretary – Somers  
Ron Hanson,  
Treasurer – Pomeroy  
Duane Beschoner – Lohrville  
Darcy Maulsby – Lake City  
Joe Parker – Lohrville  
Keaton Hildreth, CEO



**Know what's below.  
Call before you dig.**

**IOWA ONE-CALL  
AT 811 OR  
(800) 292-8989  
BEFORE YOU DIG**

### EASY WAYS TO PAY BILL:

**Online:** Access through  
[www.calhounrec.coop](http://www.calhounrec.coop) and pay  
online 24/7.

**Mobile App:** Download our app

**Auto Bill Pay (ACH):** Deduct  
from your bank account. Find  
the form on our website or stop  
by the office.

**Phone:** Call the office and  
make a payment over the  
phone with a card or checking  
account.

**Outside Drop Box/  
Front Corner:**

Rockwell City, IA

**U.S. Postal Mail**

This institution is an equal  
opportunity provider and employer.